



# DOSATRON®

An Ingersoll Rand Business



## D45RE8-IE - 20 GPM SERIAL # 07081104 AND UP INTERACTIVE SCHEMATICS

### UNIT SPECIFICATIONS

- 1:33 - 1:12
- 7 - 70 PSI
- 1" NPT Connection

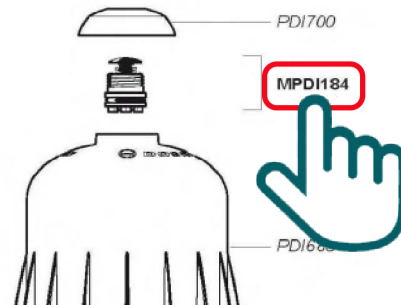
### SUGGESTED INSTALLATION

- 200 mesh/80 micron water filter prior to the unit

### SUGGESTED MAINTENANCE

- Injection Seal Kit  
Part #: **PJ150**  
For yearly maintenance

### DOCUMENT INSTRUCTIONS



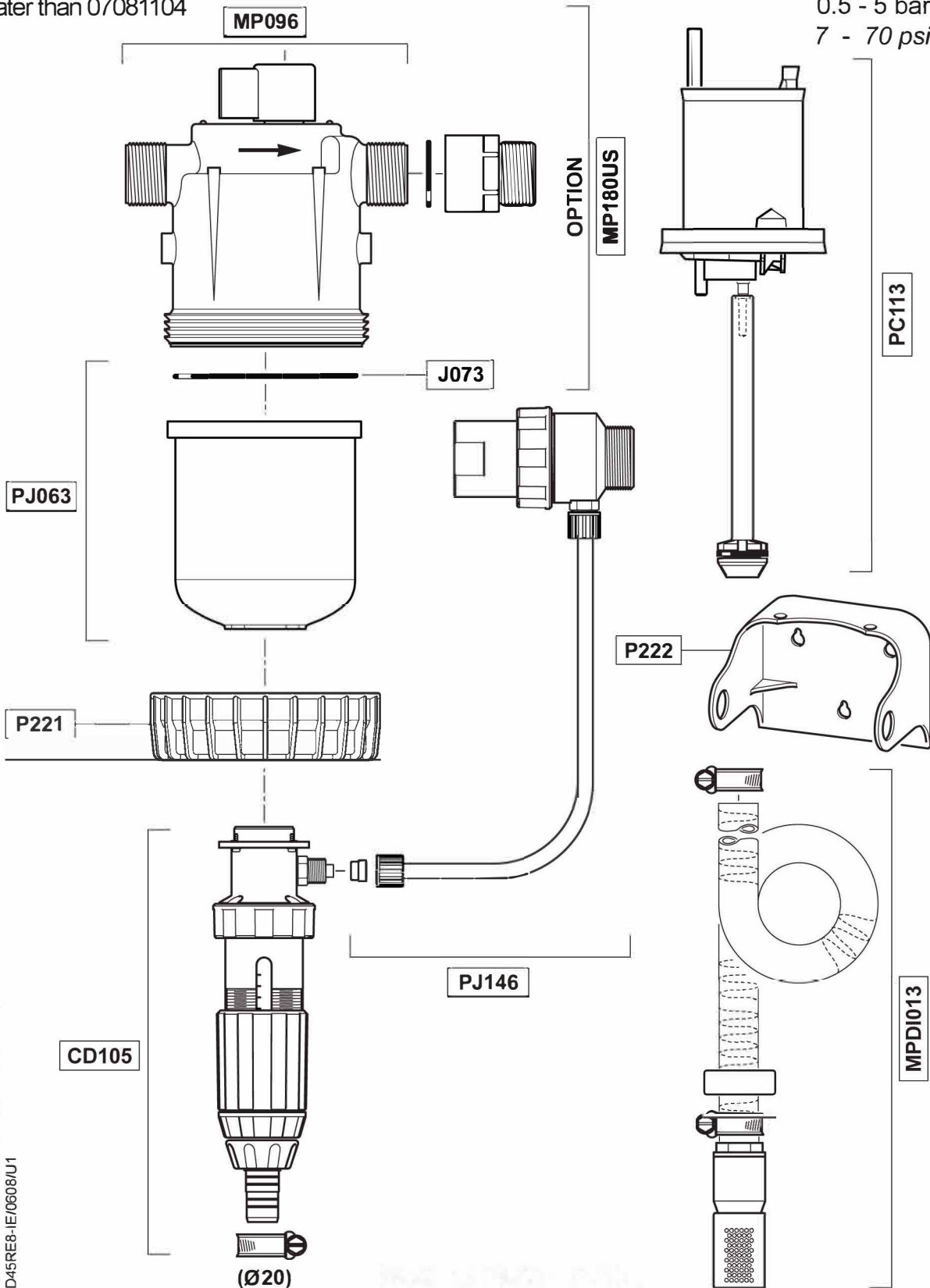
- Click on a part #, to visit item page
- Click arrow back from item page, to return to this document



# D45RE8-IE

For serial numbers  
greater than 07081104

4.5 m<sup>3</sup>/h - 3 - 8%  
20 GPM - 1:33 - 1:12.5  
0.5 - 5 bar  
7 - 70 psi



© DOSATRON INTERNATIONAL S.A.S. 2008  
D45RE8-IE/0608/U1

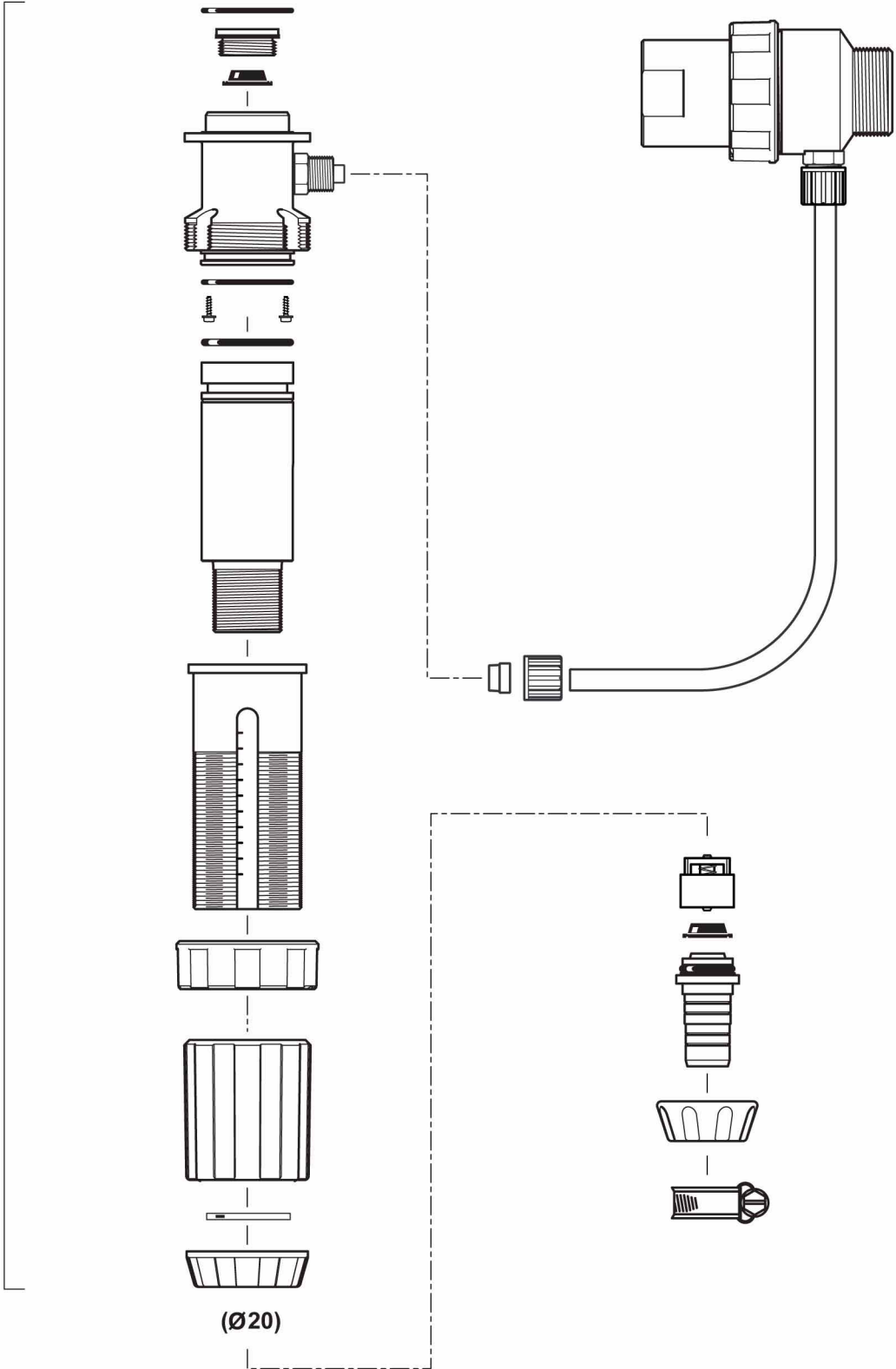
# D45RE8-IE

For serial numbers  
greater than 07081104

4.5 m<sup>3</sup>/h - 3 - 8%  
20 GPM - 1:33 - 1:12.5  
0.5 - 5 bar  
7 - 70 psi

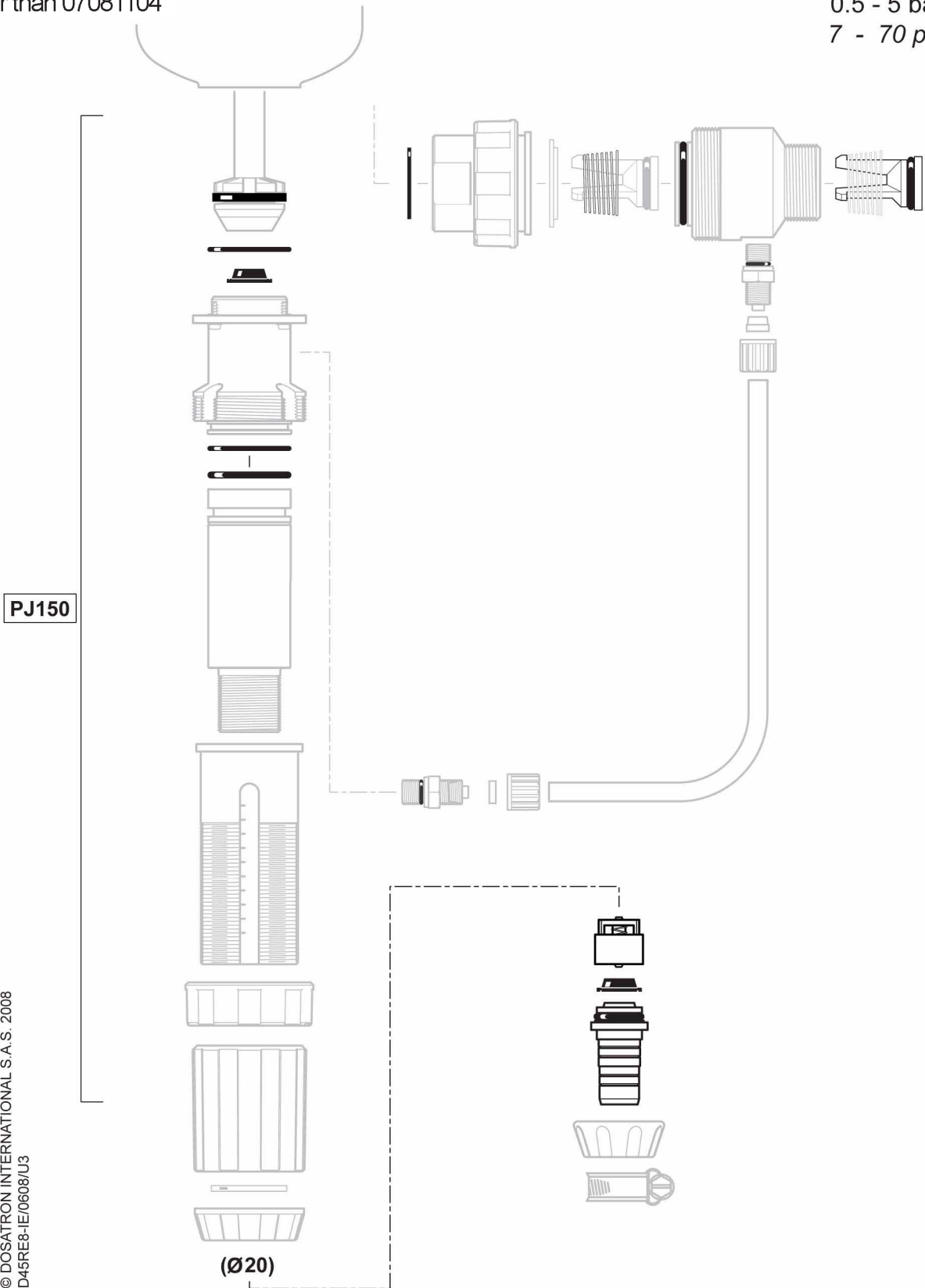
CD105

© DOSATRON INTERNATIONAL S.A.S. 2008  
D45RE8-IE/0608/U2



**D45RE8-IE**  
For serial numbers  
greater than 07081104

4.5 m<sup>3</sup>/h - 3 - 8%  
20 GPM - 1:33 - 1:12.5  
0.5 - 5 bar  
7 - 70 psi



© DOSATRON INTERNATIONAL S.A.S. 2008  
D45RE8-IE/0608/U3