



**DOSATRON®**

*WATER POWERED DOSING TECHNOLOGY*

---

# SCHEMATICS

Dosatron Liquid Dispenser  
**Model # D45RE3000 – 20 GPM**  
1:3000 – 1:1000  
7 – 70 PSI

**Suggested Installation:**

200 mesh/80 micron water filter prior to unit

One-way check valve downstream from unit for water hammer protection

**Suggested Maintenance Interval:**

Replace injection seals every 12 months

---

**DOSATRON SALES & SERVICE - NORTH & CENTRAL AMERICA**

Dosatron International, Inc.

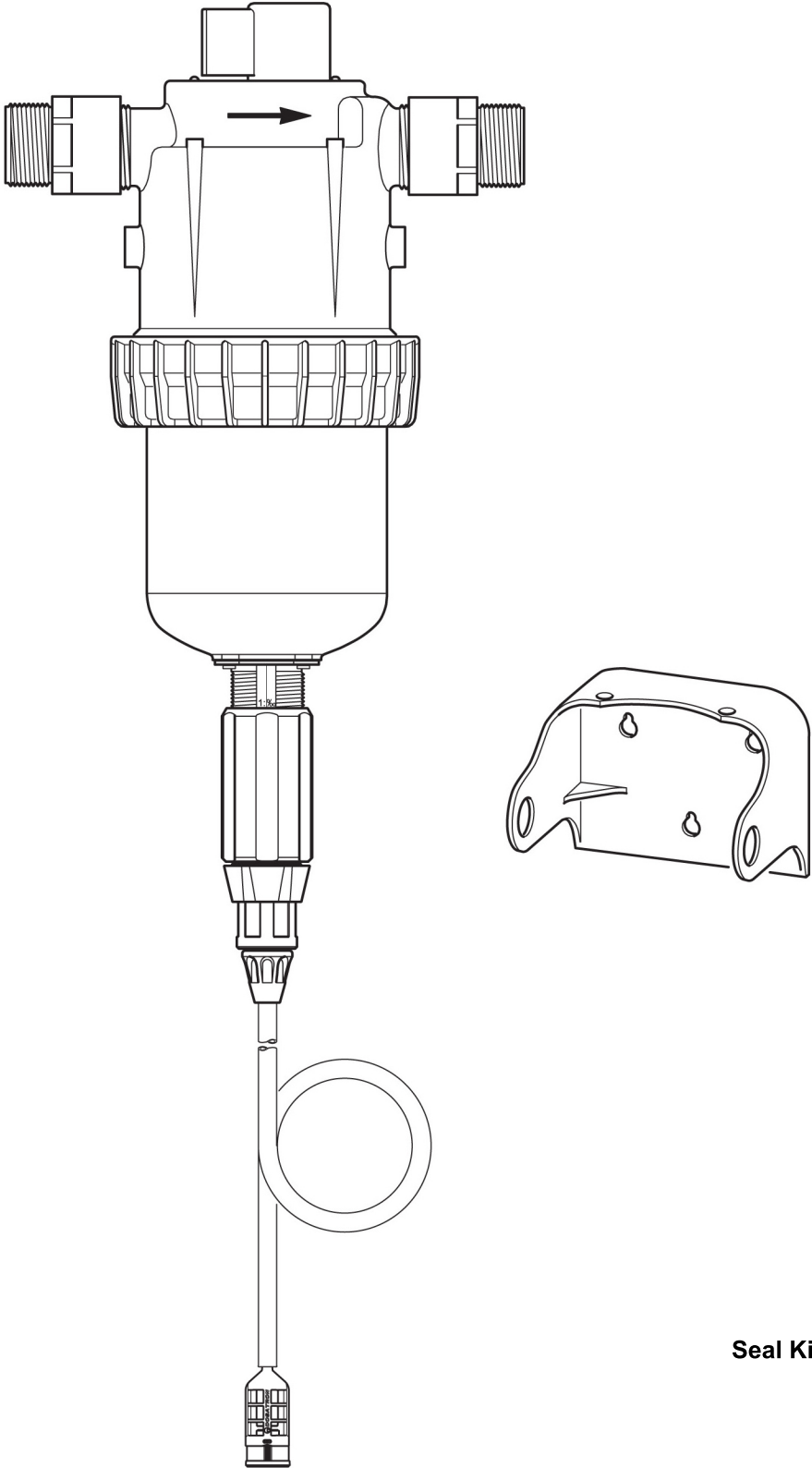
Phone: 727-443-5404 Service: (800) 523-8499

Fax: 727-447-0591

[www.dosatronUSA.com](http://www.dosatronUSA.com)

**D45RE3000**

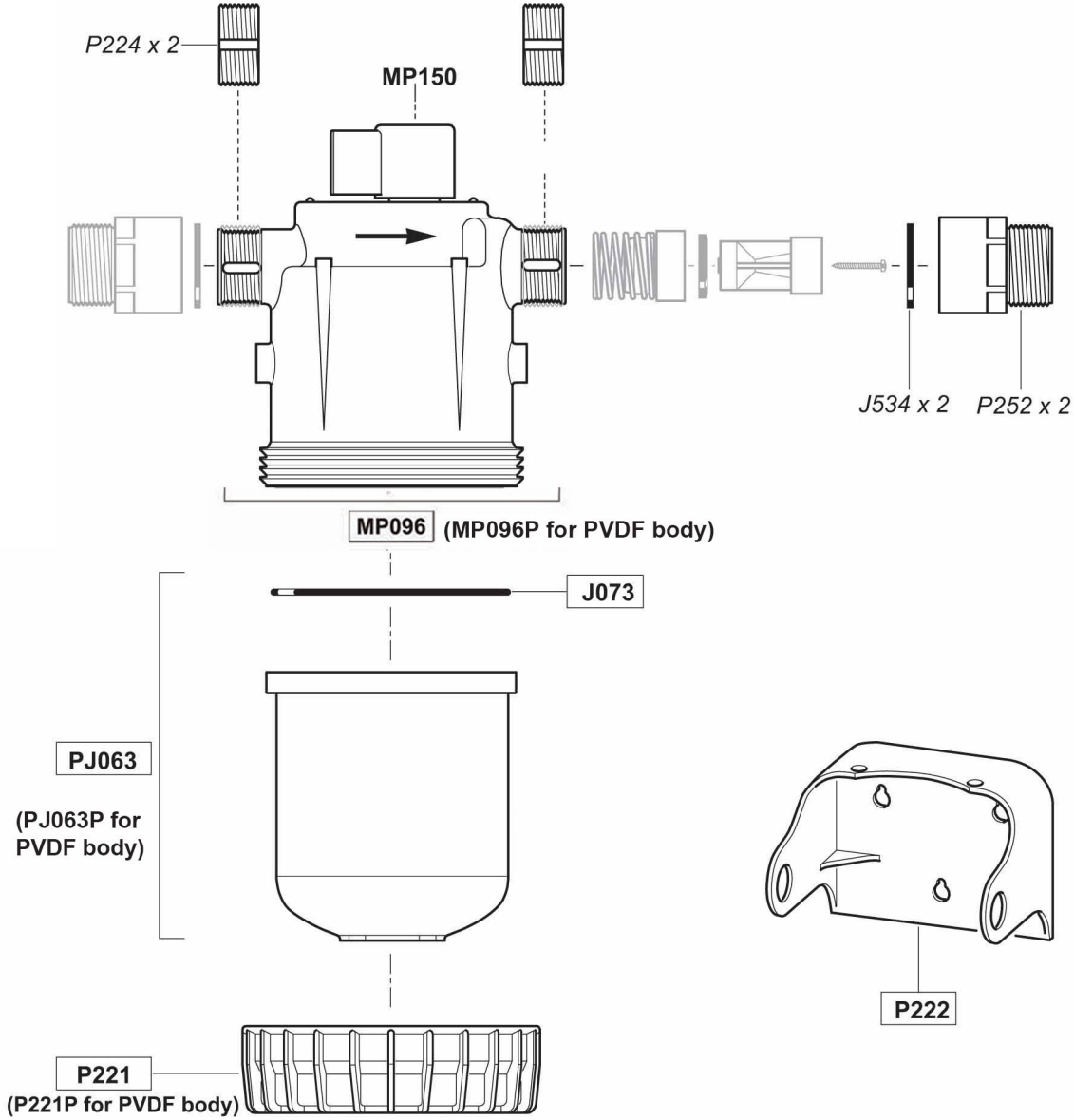
*20 GPM - 1:3000 - 1:1000  
7 - 70 psi*



**Seal Kit Part # PJ116**

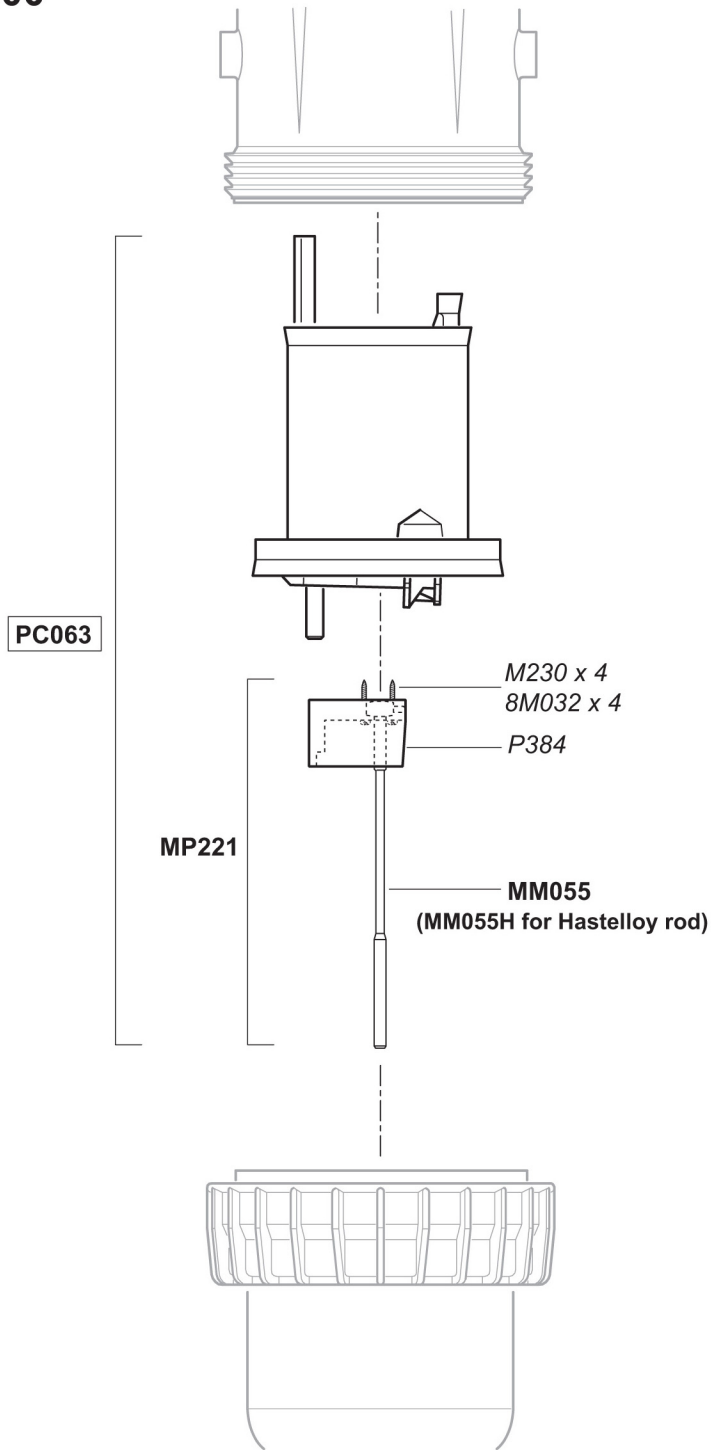
# D45RE3000

20 GPM - 1:3000 - 1:1000  
7 - 70 psi



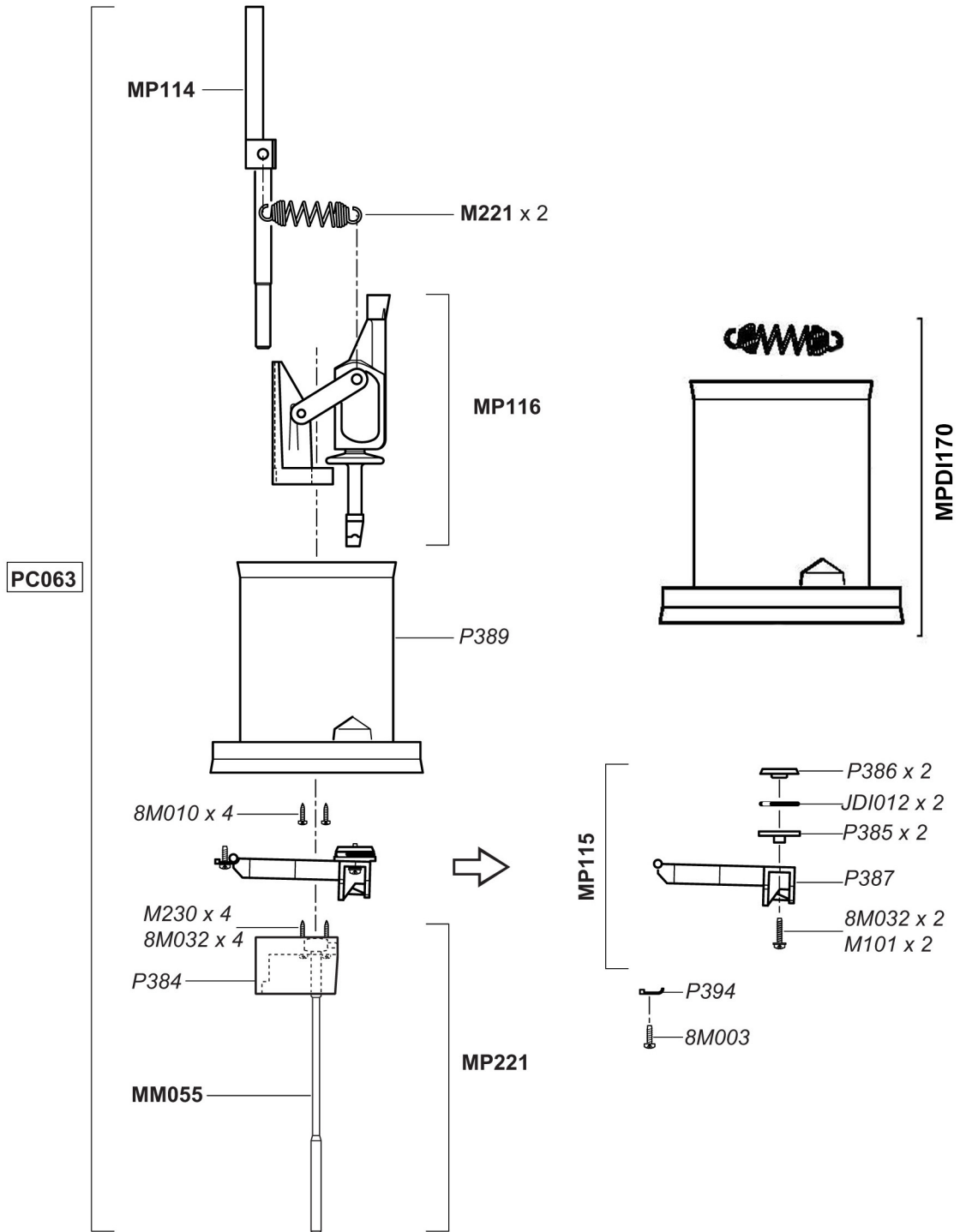
# D45RE3000

20 GPM - 1:3000 - 1:1000  
7 - 70 psi



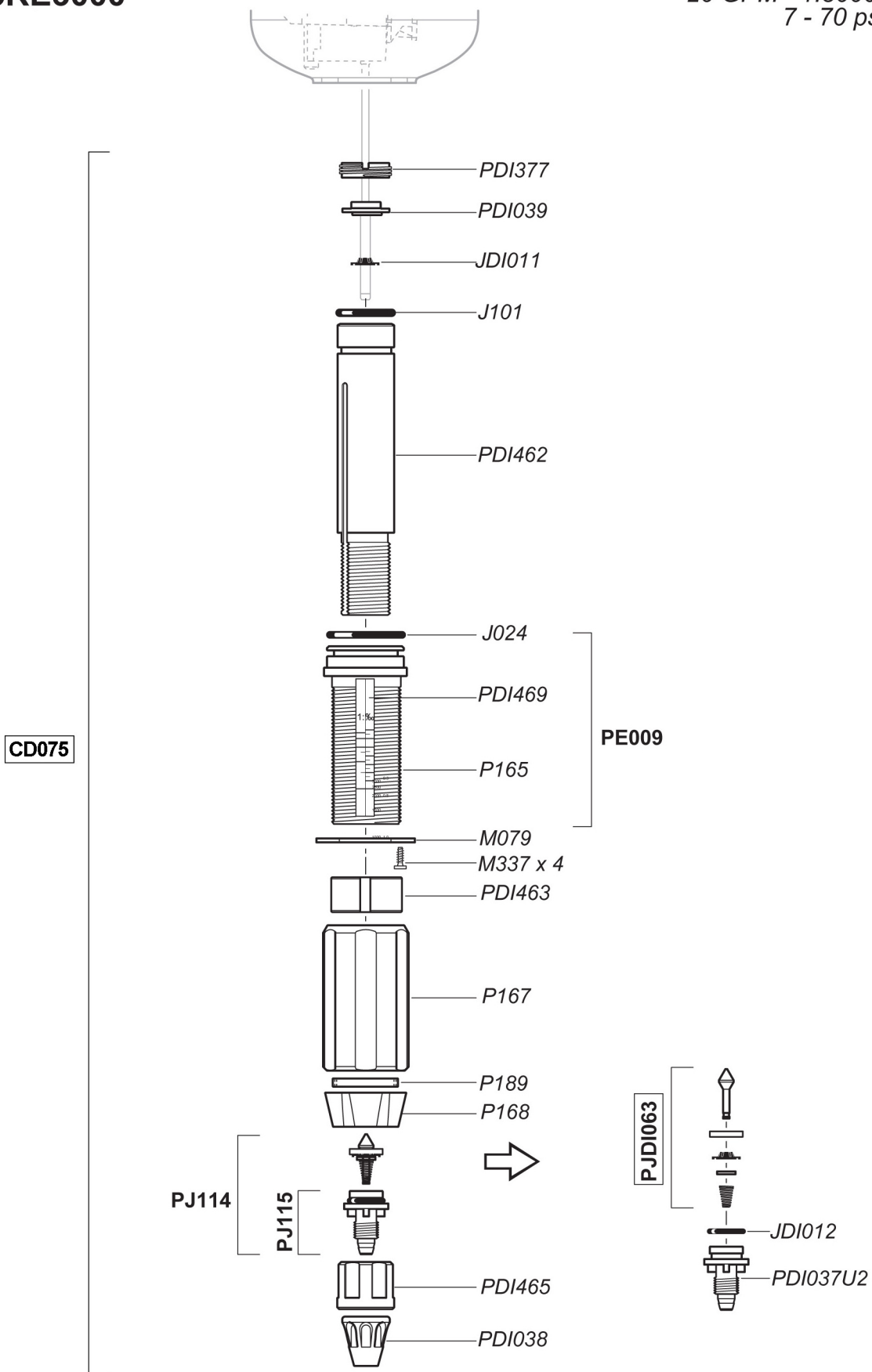
# D45RE3000

20 GPM - 1:3000 - 1:1000  
7 - 70 psi



# D45RE3000

20 GPM - 1:3000 - 1:1000  
7 - 70 psi



# D45RE3000

20 GPM - 1:3000 - 1:1000  
7 - 70 psi

